

# User guide

## “ProgrammerApp“

for distyNotruf, distyNotruf neo, distyNotruf pro, distyNotruf stationär



## **Introduction**

This operating manual describes the functions of the “ProgrammerApp” for the following devices:

- distyNotruf
- distyNotruf neo
- distyNotruf pro
- distyNotruf stationär

In this manual, the full scope of functions will be described which is only available for the distyNotruf pro. When connecting other devices, only the functions assigned to this particular device will be shown.

## **System requirements**

- PC with Windows 7/8/10
- Programmieradapter (not needed for distyNotruf neo, distyNotruf stationär), available online in the shop at “<https://www.disty.de/>”

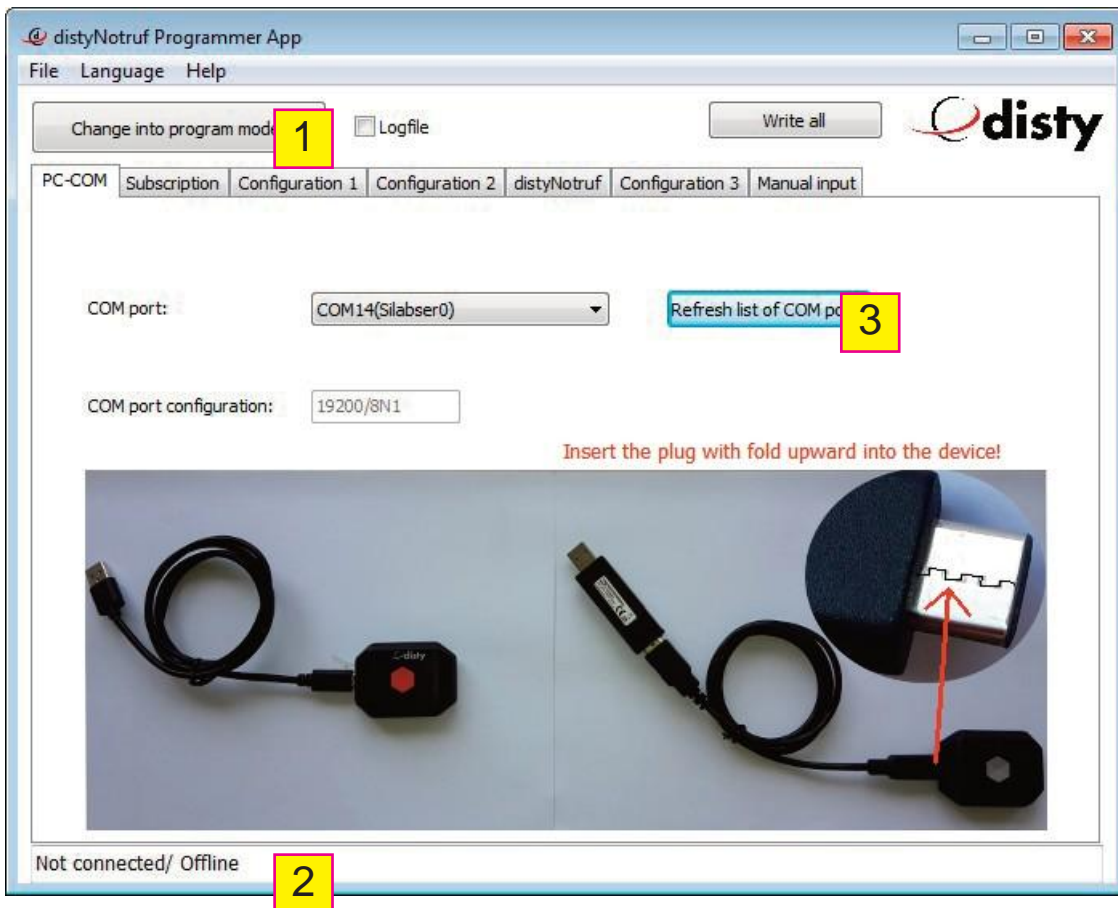
Note: Please install the necessary drivers which you can download from the website at “<http://www.silabs.com/products/mcu/pages/usbtouartbridgevcpdrivers.aspx>”.

## Start programming

- 1 First start the "ProgrammerApp".
- 2 Now connect your distyNotruf to your PC using the provided USB cable.  
At the distyNotruf stationär it is additional necessary to push the alarm button.  
ATTENTION! For distyNotruf and distyNotruf pro, the programming adapter must be used (see Fig.).  
Make sure the plug is properly positioned on the device (notch on the plug up). The plug can also be plugged in the other way around, but no connection to the device will be established!



- 3 The following window will appear:



- 4 Start programming mode (1). After the device is detected, the data will be read from the device. If the status line (2) has a green background and both LEDs on the device light up (red and green), programming mode is active. In general, after a short time, the right COM port will be automatically detected. You can see this in the status notification on the lower edge of the window (2). If this is not the case, you can select the corresponding port from the list after clicking on the button (3).
- 5 Select one of the tabs to set up the corresponding functions. These details are described in the following.

## End programming

1 Click on the “Stop programming mode!” button. You can now disconnect the device from the PC.



## Subscription

The screenshot shows the 'distyNotruf Programmer App' window. The title bar indicates 'distyNotruf no: 106516'. The menu bar includes 'File', 'Language', and 'Help'. The toolbar contains 'Stop programming mode!', 'Logfile', and 'Write all' buttons. The 'Subscription' tab is selected, showing the 'Authentication code (AC):' field (1), 'Factory setting' checkbox, and 'read' (3) and 'write' buttons. A dotted box highlights the 'PARK:' and 'SARI:' sections, each with 'Value (hex)', 'Length', 'Value', and 'Checksum' fields, and 'read' and 'write' buttons. At the bottom, the 'Subscribe distyNotruf' button (2) and 'Now!' button are visible. A green status bar at the bottom indicates 'Programming mode is active'.

- 1 Enter the PIN for the base station (1) on which you want to register the device. You can find additional information in the documentation for the corresponding base station (factory default is "0000").

Note: The entries within the dotted markings are only required when registering on special systems (e.g. multi-cell systems).

- 2 Prepare the base station (GAP-capable) to register an addition portable part (see base station instructions). Click on "Now!" (2) to start the registration process. The blinking green LED indicates that the device is looking for a base station waiting for incoming registration.
- 3 Once the device has been successfully registered, a confirmation tone will sound and the green LED will blink once every 10 s. If the device is charging, the red LED will blink every second.

Note (applies to all entry screens):

By pressing the "read" button (3), the data stored on the device will be read out and displayed in the corresponding entry fields. When you have made the changes, click "write" (3) to transfer the new data to the corresponding entry field on the device.

If you want to perform the configuration all at once and not transfer it bit-by-bit, first enter all of the information and then click "Write all" (4). Before switching to another tab, the modified data must be written to the device.

## Program alarm number (Configuration 1)

The screenshot shows the 'distyNotruf Programmer App' window with the title bar 'distyNotruf no: 106516'. The menu bar includes 'File', 'Language', and 'Help'. The main interface has tabs for 'PC-COM', 'Subscription', 'Configuration 1', 'Configuration 2', 'distyNotruf PRO', 'Configuration 3', and 'Manual input'. The 'Configuration 1' tab is active. It contains several sections: 'Alarm number' with a text field containing '1' and an 'Internal call' checkbox; 'PIN' with a text field containing '2'; 'Audio' settings including 'Loudspeaker' (slider from 1 to 8), 'Indication tone' (slider from 1 to 2), 'Microphone' (slider from 0 to 30), 'Signal tone' (slider from 0 to 3), and 'Plane' (slider from 1 to 7); and 'Bell ring' settings including 'Ring type' (dropdown menu showing 'Beep, 2 kHz, once') and 'Group ring' (checkbox labeled 'Feature active'). There are 'read' and 'write' buttons for several fields. A green bar at the bottom states 'Programming mode is active'.

### 1 Alarm number

Entry of the first telephone number called when the emergency button is pressed. If this is an internal extension, i.e. another mobile telephone registered on the same base station should be called, the checkmark next to "Internal call" must be activated (internal numbers are 1-8 and \*/group call for Gigaset). You can enter additional alarm numbers under "Configuration 2" (next page).

### 2 PIN

Entry of a PIN for remote access to the device from another telephone (DTMF signaling).

Remark: The device allows remote access using an DTMF-capable telephone similar to remotely accessing an answering machine. If a customized PIN (not "0000") has been entered here, it must be entered for remote access.

### 3 Audio

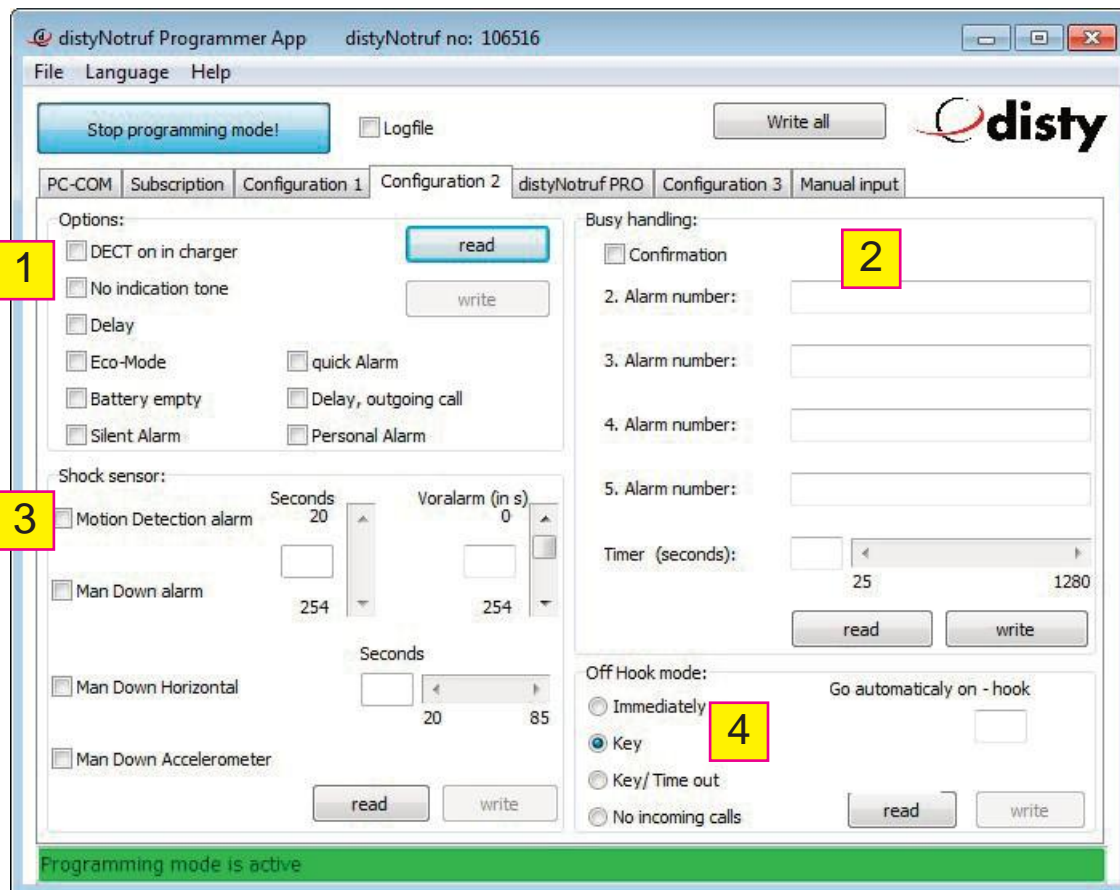
- Loudspeaker: Setting the volume for telephone calls (1= quiet / 8 = loud).
- Indication tone: Setting the volume for the signal tone (1= quiet / 2 = loud).
- Microphone: Setting the microphone amplification for telephone calls (0 = out / 2= quiet / 30 = loud).
- Signal tone: Setting the volume for the ringer tone (1= quiet / 3 = loud).
- Plane: Setting the base level for the audio settings (speaker/signal/microphone/signal tone/ e.g. 2 = office / 5 = industrial). If the level is too high, there is a risk of over-modulating the speaker and microphone; if conversations are distorted, lower the respective setting (speaker and microphone) a bit.

### 4 Bell ring

- Ring type: Select a ringtone from the list to signal incoming calls on the device.
- Group ring: If you are operating the device on, e.g. a Panasonic base station, this feature must be active (checkmark activated) to ensure error-free signaling.



## Configuration 2



- 1 Options (the descriptions pertain to the marked features (checkmark activated))
- DECT on in charger: The telephone/emergency call function also remains active when the device is charging.
  - No ring tone: Incoming calls will only indicated visually, not acoustically.
  - Delay: Microphone and alarm button inactive for the first 5 seconds.
  - Eco-Mode: The device functions as a pure emergency call placement unit. The receiver is switched off and no incoming calls can be accepted. This increases the battery life to the maximum. This setting must be complied for the “distyNotruf stationär”.
  - Battery empty: In addition to the local signaling when the battery is almost empty, a call will be made to the saved emergency numbers with a notification.
  - Silent Alarm: Alarm calls are made silently and no signal tone sounds.
  - quick Alarm: The alarm call will be triggered by briefly pressing the button. Please note that with this setting, the alarm may be triggered unintentionally! If this feature is switched off (checkmark NOT activated), the button for triggering the alarm call must be pressed for approx. 1 second.
  - Delay, outgoing call: While dialing or hearing the dial tone, the microphone is shut off.
  - Personal Alarm (not available on all devices): This setting makes it possible to directly call the second saved emergency number (“2. Alarm number”) by pressing the button twice in quick sequence. The prerequisite is that the second emergency number has been entered and call forwarding (“Busy handling”) is NOT activate (checkmark NOT activated). At the same time, the short button press will be deactivated, i.e. if pressed normally, the button has to be held down for approx. 1 second.

## 2 Busy handling

If additional emergency numbers have been stored ("2. Alarm number", "3. Alarm number", etc.) and call forwarding is activate (checkmark activated). If the call to the first emergency number (see "Configuration 1") is not accepted or the line is busy, the next emergency number will be called. The time until this happens can be set in seconds in the "Timer" field.

## 3 Shock sensor (distyNotruf pro only)

Important notice!

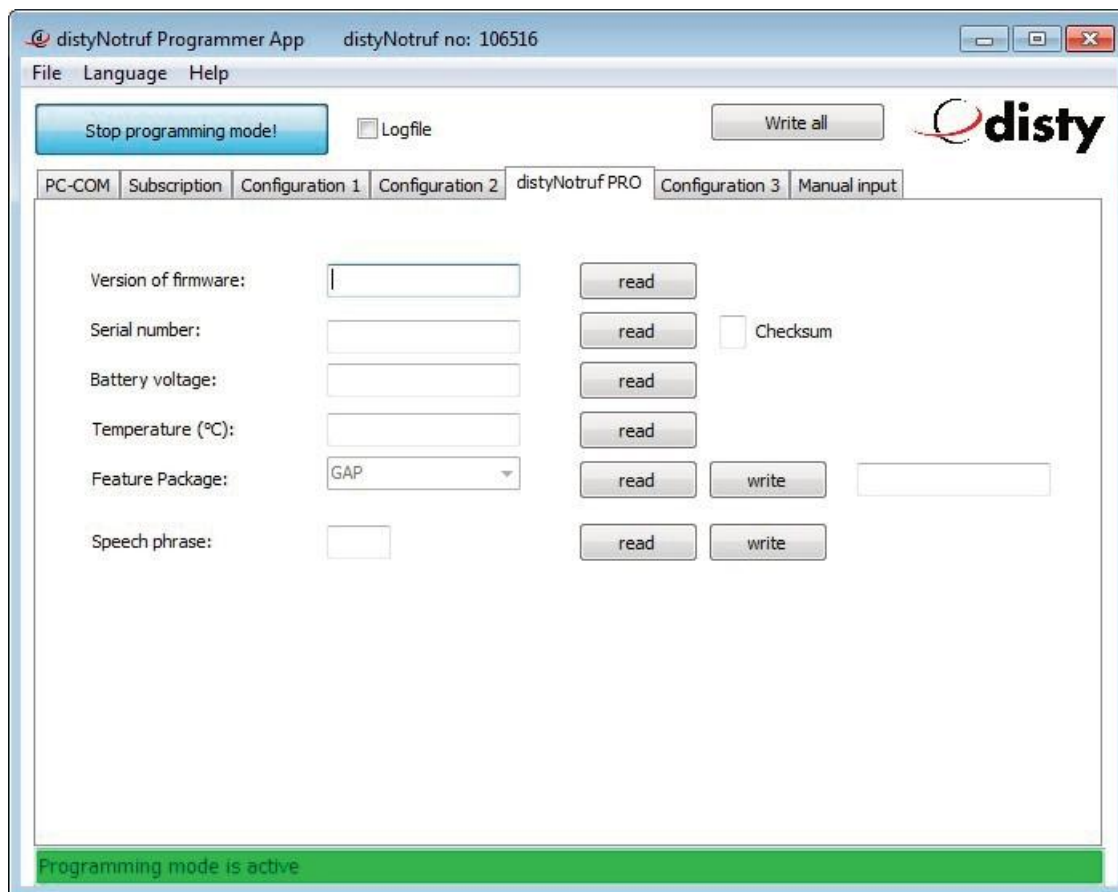
- The shock sensor only works if the device is not in charging mode.
- "Motion Detection Alarm" and "Man Down Alarm" cannot be activate simultaneously.
- The alarm call will be triggered after the time set under "Pre alarm" has passed. The "Pre- alarm" phase is signalized by the blinking red LED and a beep (every 2 seconds) and allows the user to cancel an (erroneous) alarm call by pressing the emergency call button.
- When using the "Man Down Accelerometer" and/or "Man Down Horizontal" functions, the device must be worn at the hip (belt clip). It is important to attach the device so it can record all of the body's movements.
- Motion Detection Alarm: The alarm will be triggered if an impact is detected after a set time during which no movement is registered. Example: If e.g. 180 seconds (= 3 minutes) are set, an emergency call will be placed if the device does not move for at least 3 minutes and then movement is detected.
- Man Down Alarm: The alarm will be triggered if no movement is detected within a set period of time.  
Example: If e.g. 240 seconds (= 4 minutes) are set, an emergency call will be placed if the device does not move for at least 4 minutes.
- Man Down Horizontal: The alarm will be triggered if the device is in the horizontal position for a set period of time.
- Man Down Accelerometer: The alarm will be triggered if a typical acceleration profile of a falling person is detected.

## 4 Off Hook mode

- Immediately: An incoming call will be immediately accepted. A short signal tone will sound, the green LED will light up and the users can speak.
- Key: The key has to be pressed to accept a call.
- Key / Time out: An incoming call will be accepted by pressing the key or, if this doesn't happen after 40 seconds, the call will be automatically accepted.
- No incoming calls: Calls will not be signalized and cannot be accepted.
- Go automatically on-hook (busy tone detection): When operating with a "normal" DECT basis, you do not need to change anything. If, however, you are operating the device directly with a telephone system, it may be necessary to modify this setting.



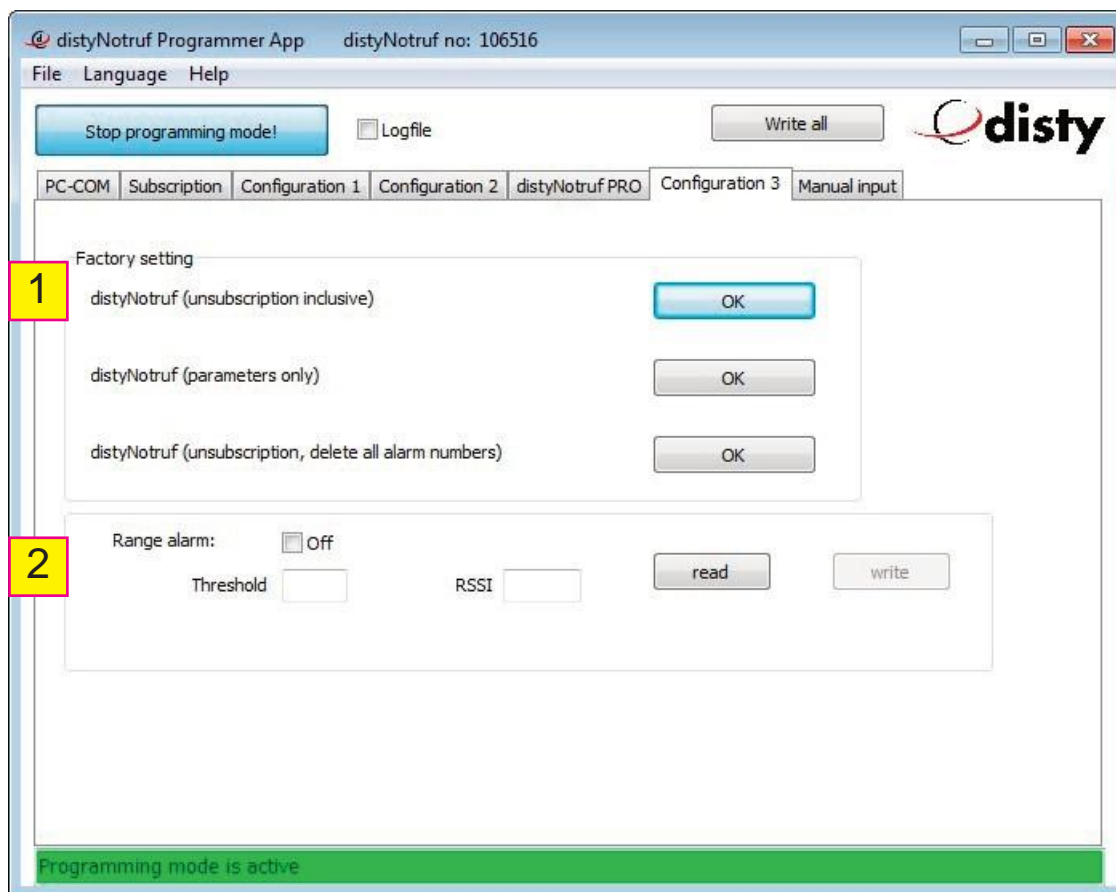
**distyNotruf info** (for instance, distyNotruf pro will be displayed)



#### Display

- Version of firmware
- Serial number
- Battery voltage
- Temperature (distyNotruf Pro only)
- Feature Package (for operation with a variety of alarm servers / distyNotruf Pro only)
- Speech phrase: Selection of the language for the speech texts (1 = German, 2 = English, 3 = French, 4 = Italian, 5 = Spanish).

## Configuration 3

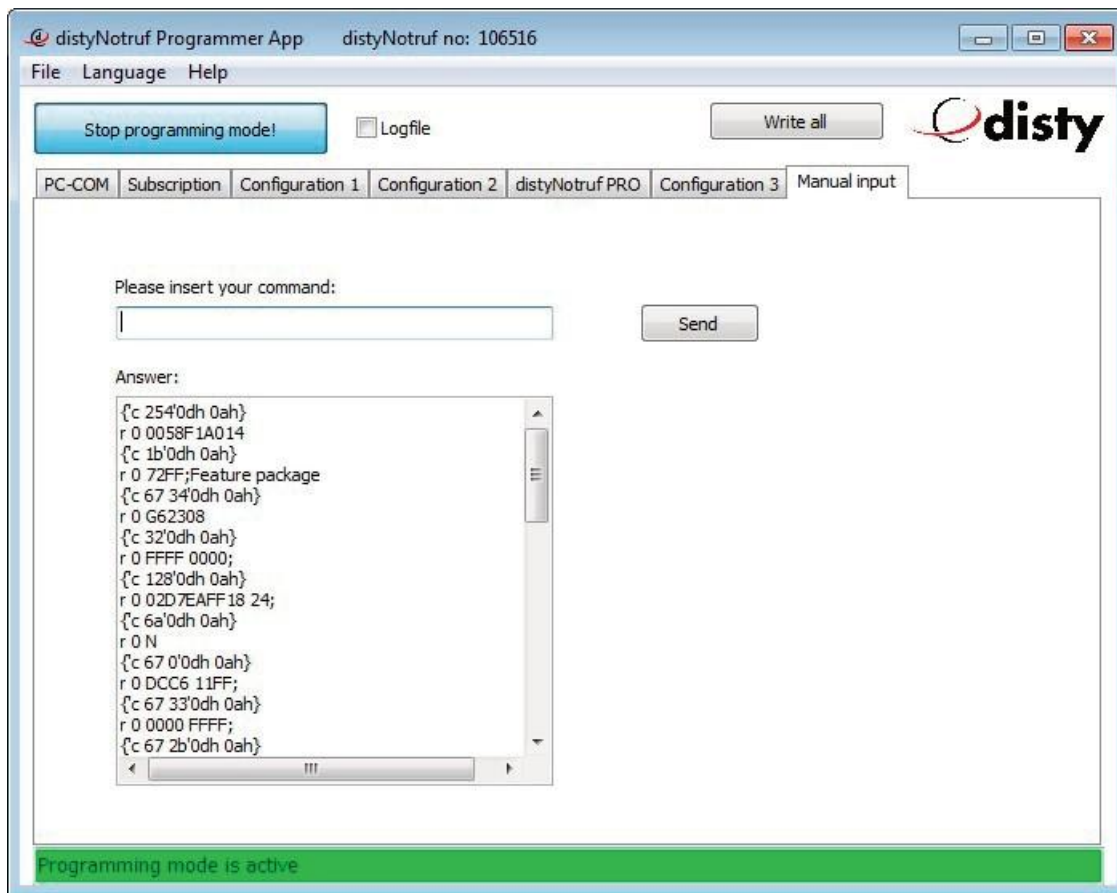


### 1 Factory setting

- Unsubscription: The device will be deregistered from the base station and all registration information will be deleted. If, for instance, the base station on which the device was registered is no longer available, this is the only way to prepare the device for registration on another base station without deleting the personal settings.
- Parameters: The personal settings (e.g. volume, ringtone, etc.) will be reset. The registration information for the base station and the entered emergency call numbers will remain on the device.
- Default: The device will be reset to factory settings. All settings, emergency call numbers and the registration information for the base station will be deleted.

### 2 Range alarm: The device warns the user with a beep if it is at the edge of its range with respect to the base station and its functionality may be limited. The factory set values are generally optimal and should only be changed in exceptional cases. Marking the checkbox (checkmark activated) switches the function off. Only available during a connection.

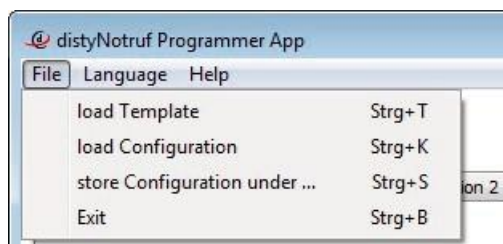
## Manual input



This menu is only for servicing purposes.

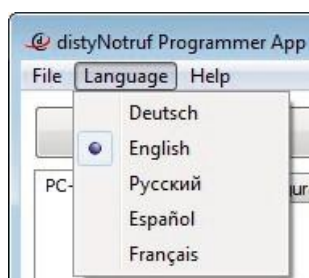
## Menu functions

### Menu “File“



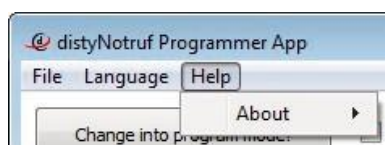
- load Template: Load preset parameters onto one or more devices.
- load Configuration: Load an already saved configuration onto the device.
- store Configuration under...: Save the current configuration of the connected device.
- Exit: End program.

### Menu “Language“



- Select a language for the screen texts in the “ProgrammerApp”.

### Menu “About“



- Information about the program version.

Operation manual distyNotruf "ProgammerApp"

Subject to change!

Any copying, including excerpts, require a written agreement!

disty communications gmbh  
Holzkoppelweg 14  
D - 24118 Kiel  
Germany

Version 1.1  
Issue 07/2018